



Westerham Park
Westerham, TN16 2ED

Guide Price
£1,250,000

Property Summary

**** Plots 6 & 7 Reserved****

Westerham Park occupies an elevated position at one of Kent's highest points, enjoying far-reaching views across rolling countryside and towards London.

Set within this private gated development of just seven substantial homes, this is the only bungalow available at Westerham Park.

This exceptional four bedroom single-storey residence combines contemporary design with classic rural character, offering generous and well-balanced accommodation throughout.

Anticipated completion Summer 2026.

Guide Price £1,250,000 to £1,500,000.



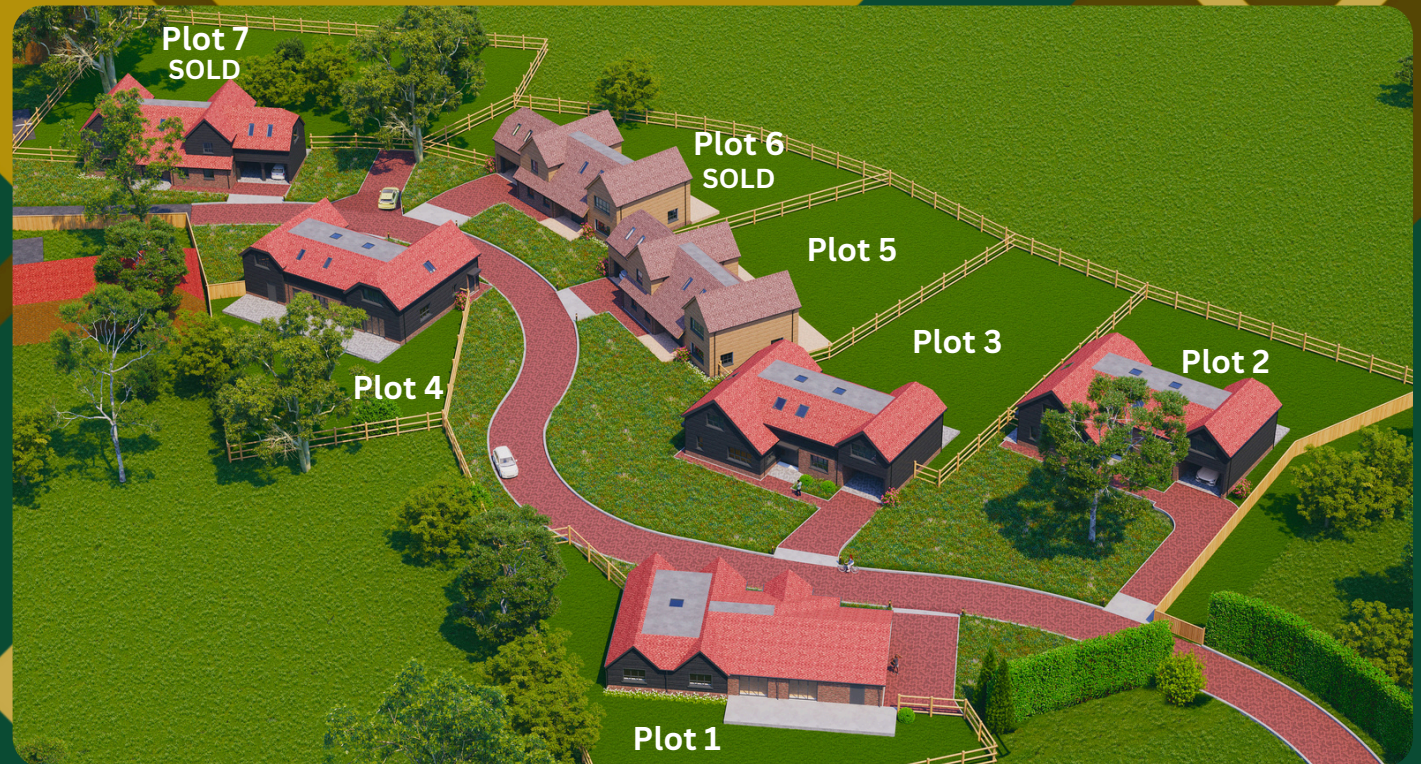
4



3



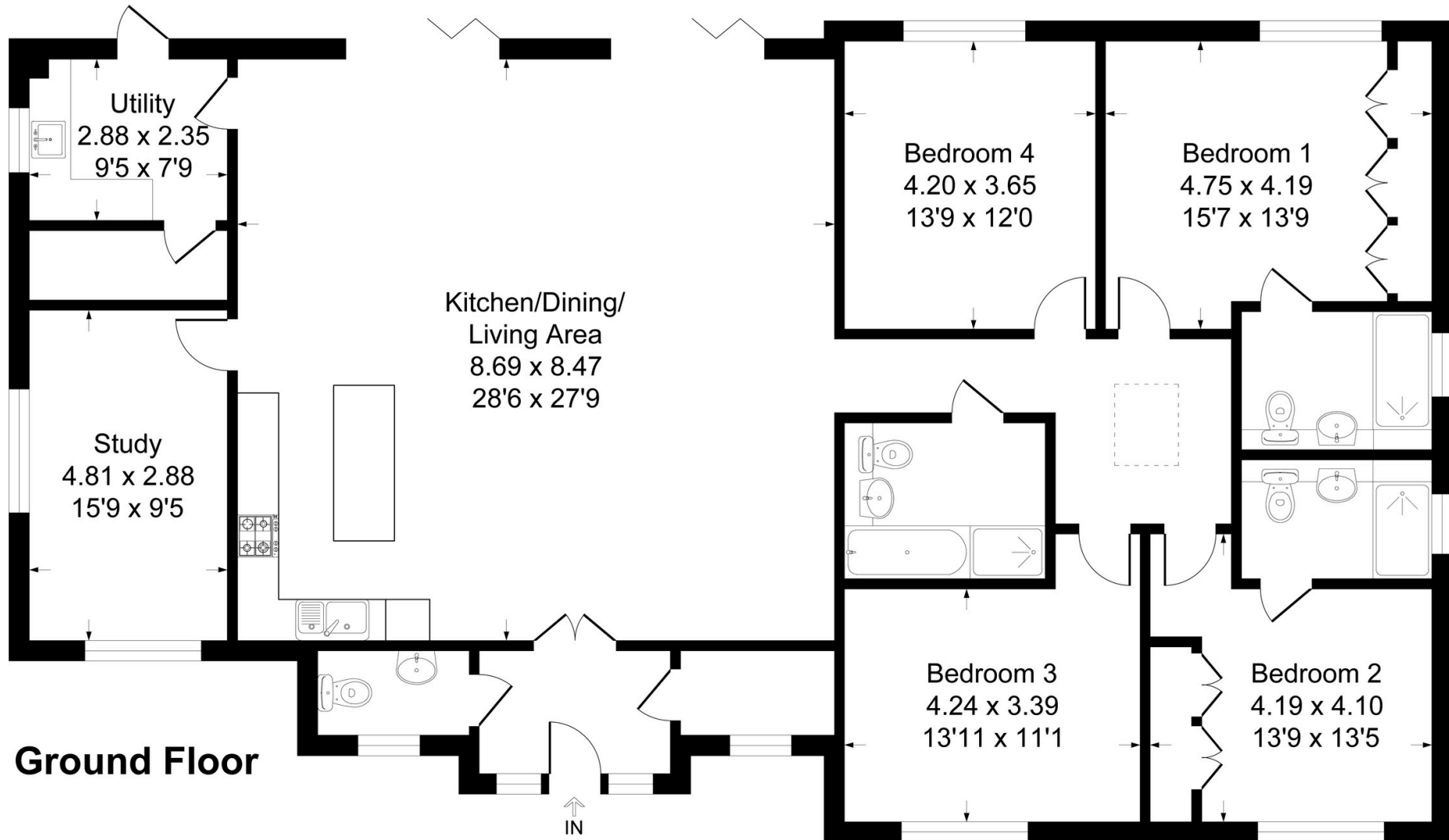
2



Floor Plan

Westerham Park

Approximate Gross Internal Area 209.8 sq m / 2259 sq ft

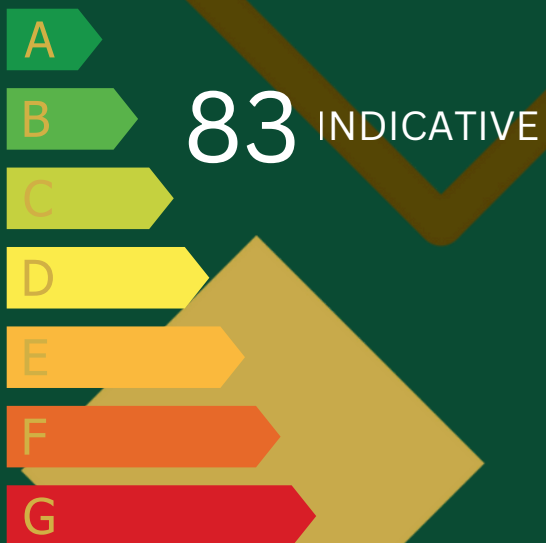


This plan is for layout guidance only. Not drawn to scale unless stated. Windows and door openings are approximate. Whilst every care is taken in the preparation of this plan, please check all dimensions, shapes and compass bearings before making any decisions reliant upon them.

Produced By Planpix

Tenure:
Freehold

Local Authority:
Sevenoaks District Council



Surrey Land Projects